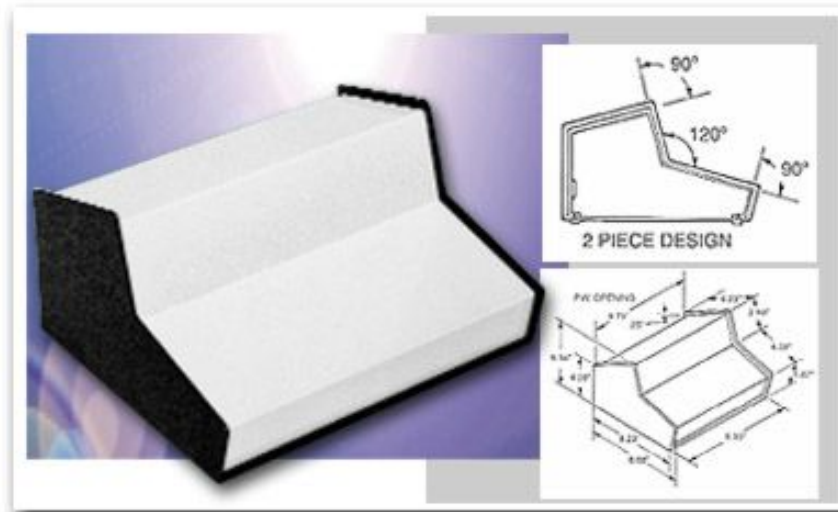


Small Metal Enclosures Compucab Series SC-13100



[Click on Image for Larger View](#)

Another best-seller from Bud for good reason: These standard dual-slope enclosures have that custom-designed keyboard styling and, equally important, they can be used for a variety of instruments.

Design Features

Base and side, .09"aluminim; back panel and cover, .05" aluminum. Rubber feet furnished. Two configurations(se SC-13101)

Bonus Features

Maximum visibility, no exposed screws on front panel area. Knockouts in louvered rear panel. SC-13100 weighs 3.25 lbs. SC-13101 weighs 7 lbs.

Finishes

Black Texture (BT) base with Smooth White cover.

| Compucab Series | | |
|-----------------|---|---------------|
| Catalog Number | Drawings | Weight (Lbs.) |
| SC-13100 | PDF DXF | 3.25 |
| SC-13101 | PDF DXF | 7.00 |

DXF Autocad DXF Specifications File
(Requires CAD software such as AutoCAD)

PDF Adobe PDF Specifications File



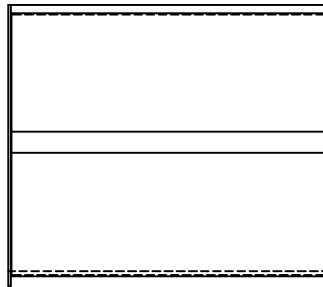
[Download PDF Viewer](#)

PART
NAME

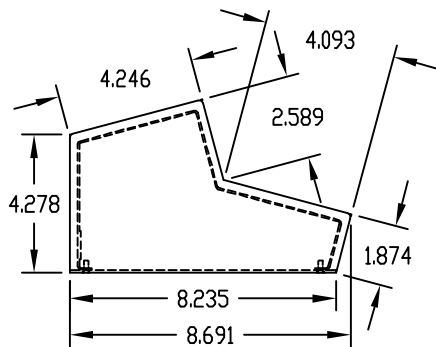
COMPUCAB

PART
No.

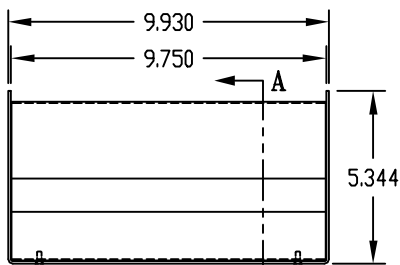
SC-13100



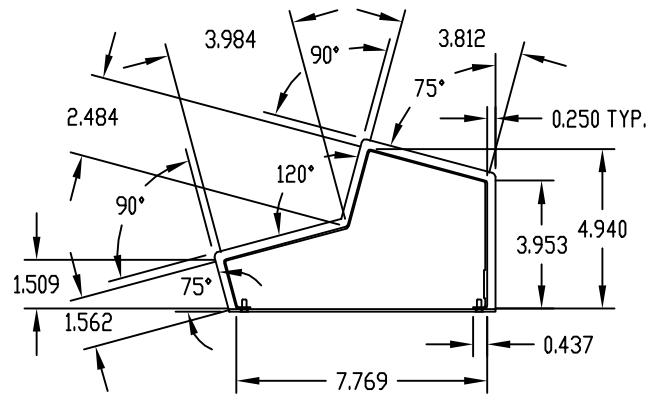
TOP VIEW



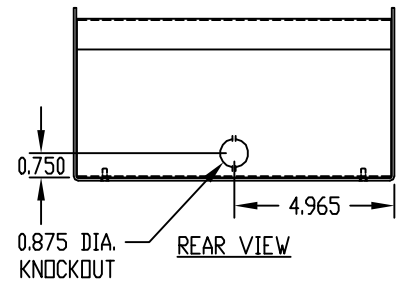
SIDE VIEW



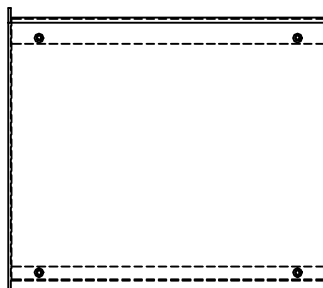
FRONT VIEW



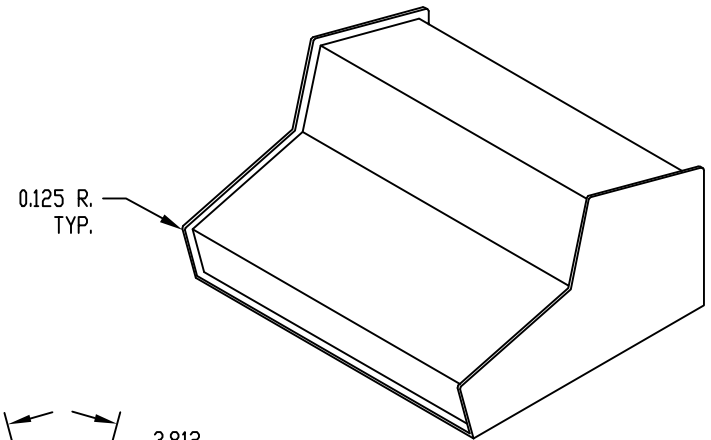
SECTION "A-A"



REAR VIEW



BOTTOM VIEW



MATERIAL:

BASE ____ 0.090 THK. ALUMINUM
COVER ____ 0.050 THK. ALUMINUM

FINISH:

BASE ____ BLACK TEXTURED
COVER ____ WHITE (PREPAINTED)
FEET ____ BLACK

SHIPPED UNASSEMBLED

SUPPLIED WITH FOUR (4) #6-32 x 3/8 LG. SCREWS
AND FOUR (4) SELF-ADHESIVE FEET.